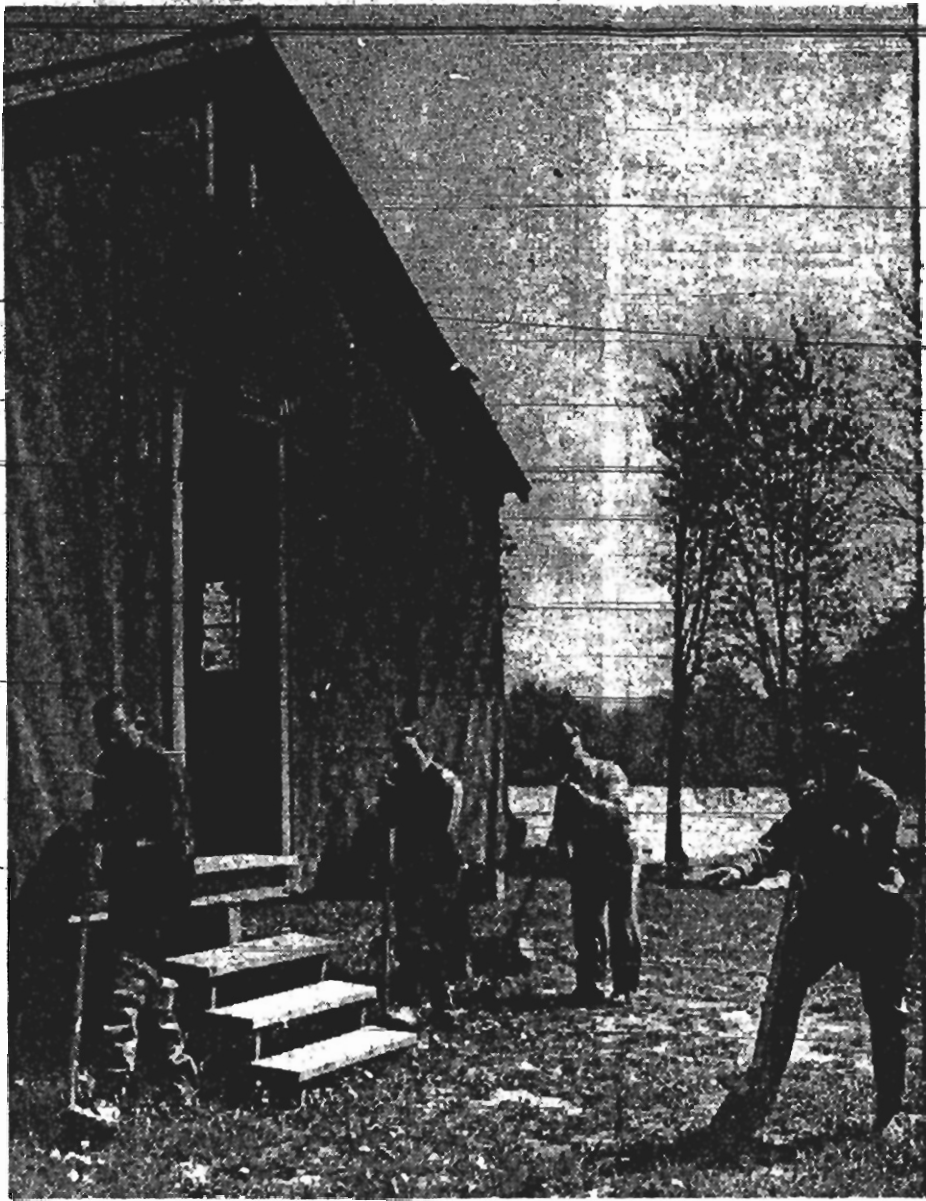


## Sportsmen Dig In For Clubhouse



To be a good fisherman one must be able to tell a good tale, and to tell a good tale one must have the proper atmosphere — something quiet and restful like a clubroom or a clubhouse.

None is more convinced of this theory than the ardent members of the Western Ontario Fish and Game Protective Association, and none more willing to put their theories into practise.

At the moment the fishermen in the association are without a clubhouse, but shortly that situation is going to be remedied.

Saturday saw the initial move in the remedial process, when the soon-to-be-tired muscles of the sportsmen turned the first sod on the new association clubhouse near the old Luking's Pond, Concession 2, Westminster Township.

The spade work began in earnest over the week-end as sportsmen began the shovel excavation on their association-owned 15-acre clubhouse site. The last

♦ *Along the shores of Luking's Pond in Westminster Township, members of the Western Ontario Fish and Game Protective Association on Saturday turned the sod for their new clubhouse. Left to right, Wilbur Luce, secretary; Charles Hale; Mel Brock, chairman of the building committee; Jack Davis, president.*

two acres were bought two years ago, to add to the 13 acres the association has owned for 25 years.

Future home of the tale-spinning nimrods will be converted former servicemen's cookhouse and barrack hut. The huts will be remodelled and joined to form the 68-foot long clubhouse with an additional 12 feet on the front for cloakroom use. For the crack-shots, a 75 feet rifle range is being constructed in the basement of the combined structure. Hydro service brought in by a

special line from the road to the clubhouse will be supplied, and a gravel road carved out of the farmland by the sportsmen will form a drive to the club quarters.

To provide the necessary background for the stories, the pond nearby for the past quarter century has been stocked with trout, bass and pickerel by the association.

For some members though, it will be only the tale of the one not that got away but was put back for the association executive has placed a catch limit on the pond to stop exploitation of fishing by any one group in the absence of others.

The official sod turning ceremony that preceded the back-breaking job of foundation excavations for the clubhouse was officiated over by Wilbur Luce, secretary; Charles Hale, member; Mel Brock, chairman of the building committee, and Jack Davis, president.

